



DC300

AUTOMOTIVE DVR DASHCAM

Vehicle windscreen mount digital video recorder with GPS route/speed tracking

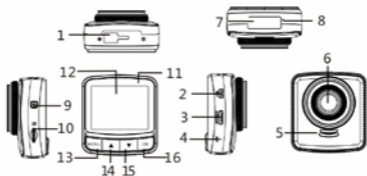


Installation & User Manual

Notice

1. Important: Only use the supplied charger/power supply & USB lead.
2. Never disassemble or attempt repair of this product.
3. Do not manually operate the device whilst driving.
4. This camera is intended for non-commercial use.
5. Mongoose is NOT responsible for the loss of any data/content during operation.
6. GPS location and speed accuracy may differ depending on weather and location such as high buildings, tunnels, undergrounds, or forests.
GPS satellite signals cannot pass through solid materials (except plastic and glass). Tinted windscreen may affect the performance of the GPS satellite reception.
7. The values displayed in this system, such as speed and position may be inaccurate due to the influence of surrounding environment or user settings.
They are only a guide for your reference.
8. If powering up inside a garage or building, GPS location will take longer due to poor indoor reception.
9. **Do not leave the DVR on the windscreen when parked, especially in summer, as it is a security risk and may get damaged by excessive heat.**

Product Overview



No.	Description
1	Suction cup connect
2	USB Power
3	HDMI output
4	Reset
5	Speaker
6	Wide angle lens
7	Serial No.
8	Microphone

No.	Description
9	Power button
10	Card slot
11	LED indicator
12	2.4" screen
13	Menu
14	Up
15	Down
16	OK

Getting Started

Inserting the micro SD Memory Card

Insert the memory card with the gold contacts facing the back of the DVR. Push the memory card until it clicks into place. Do not force it.



To remove the memory card, push to eject the card out of the slot.

Be careful not to drop it down any vehicle air vents or inaccessible gaps

1. DO NOT REMOVE OR INSERT THE MEMORY CARD WHEN THE DEVICE IS POWERED OR SWITCHED ON AS THIS WILL DAMAGE THE MEMORY CARD.

2. Use class 10 (UHS 1) or above micro SD card for this DVR.

Can accept up to 128gb micro SD card.

3. **IMPORTANT:** Format the micro SD card from the DVR settings menu before first use. This will also download the Windows PC viewer programme onto the micro SD – copy the file to your PC.

Mount to Windshield

1. Attach either of the brackets to the device. Slide it into the bracket holder until you hear a click.



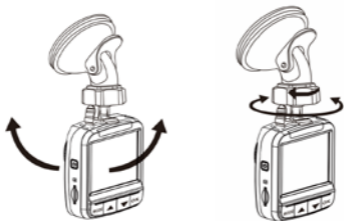
2. Clean the windscreen area first with isopropyl alcohol (or non-oil based solvent – do not use metholated spirits).
3. Use the suction mount or the 3M adhesive bracket.
4. Make sure the bracket is securely locked into place.



Adjust the device position

Loosen the knob to adjust the device.

Tighten the knob to make sure the device is securely locked in place.



SECURITY ADVICE:

When parking your vehicle, always remove the camera and suction bracket to avoid theft.

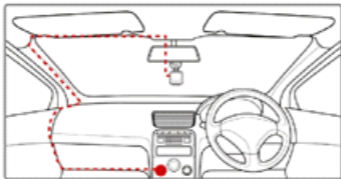
HEAT ADVICE:

The DVR and its micro SD card are sensitive to heat. We advise removal from the windshield when parking and protecting the DVR and micro SD card from excessive heat.

P.S. Your bracket(s) in the package may differ from the pictures.

Connecting to Power

Use only the supplied car adapter and USB lead to power the device and charge the built-in battery. Whilst USB leads have similar appearances, the wiring configuration may differ – only use the supplied lead.



1. Connect one end of the car adapter to the mini USB connector of the DVR.
2. Run the lead as shown above. Plug the power adapter into the cigarette lighter/power socket of your vehicle. Once the vehicle engine is started, the DVR powers on and automatically starts recording.

Note:

1. The DVR's yellow LED lights up while the battery is charging.
2. Please take note if the environment temperature reaches 45°C or above, the car adapter still can supply power to DVR, but it will not charge the battery. This is the characteristic of Lithium polymer battery and is not a malfunction.

Turning the DVR On / Off

Automatic

When the vehicle engine is started (ACC on), the DVR automatically turns on and starts recording. When the engine shuts down (ACC off), the DVR automatically saves the recording and turns the power off within 5 seconds. A countdown timer appears on the screen.

Manual Off

To manually turn on or off, press the side POWER button for 2 seconds.

Initial Settings

Before using the device, we recommend you to set up the correct date and time.

Set the Date and Time

To set the correct date and time, do the following in standby window:

1. Press [MENU] button to enter the OSD menu.
2. Press [▼] button 2 times, to select system setups.
3. Press [OK] to enter system setups. -Press[▼] to select Data and Time.
4. Press [OK] and use [▲] [▼] to change the digits. Press [OK] again to move to another digit.
5. Repeat step 4 until the date and time setting is complete.

Recording Videos

When the vehicle engine starts (ACC on), the DVR automatically turns on and starts recording video and sound. Recording will automatically stop when the engine is switched off (ACC off).

Press the [OK] button to stop recording manually.

Note:

On some vehicles, the recording will continue when the engine is switched off because the power supply is not ignition controlled. If this happens, please remove the car adapter from the cigarette lighter/power socket or manually turn off by the POWER button.

Manual recording

1. Press the [OK] button to start recording. Red LED lights
2. Press the [OK] button to stop recording.

Note:

1. One video file is saved for every 1, 2, 5, or 10 minutes of recording.

You can select the timing by using the Menu.

2. The device saves the recording in the memory card. If the memory card capacity is full, the oldest file in the memory card is overwritten (loop recording).

See Using the Menu.

Emergency Recording






You can save the current recording by not being erased by the loop recording by pressing the [Menu] button to enter emergency recording mode. The [⚠️] icon will be shown immediately on the upper center of the screen and the recorded file will be protected. To stop the emergency mode, press again the [Menu] button.

Note:

1. If the G-Sensor is enabled and a collision to your vehicle is detected, the device will automatically trigger emergency recording.
2. The emergency recording file is created as a new file in a different directory, which will be protected to avoid being overwritten by normal cycling recording. If the space of emergency files exceed 25% of the card capacity, system will erase the oldest emergency files.

The Recording Screen



No.	Sign	Description
1	1920×1080 30P	Indicates the video resolution.
2		Motion detection
3		GPS. Blinking for searching. Green for stable
4		Mute recording
5		Micro SD card
6		Battery
7	2014/05/27	Date(Year/Month/Date)
8	00:25:15	Remaining recording time
9	12:03:17	Current time
10	000:00:27	Recording time
11	Car ID	Car ID. How to set, please check menu.

Taking Still Photographs

You can also use this DVR to take still photos.

1. From the standby screen, hold the [MENU] button to enter Photo Mode.
2. Press [OK] to button to take a photo.

The Photograph Screen



No.	Sign	Description
1		Photo mode
2		Remaining possible photos
3		GPS
4		Mute – Press up/down buttons at same time to toggle on/off
5		Micro SD card
6		Battery

Playback Videos and Photos

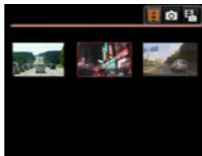
If recording is in progress, press the [OK] button to stop recording. The standby screen is displayed.

Playing videos

1. In the standby screen.



2. Press[▼] to enter into video playback list.



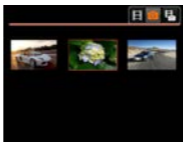
3. Press the [▲][▼] button to browse for the desired video file and press the [OK] button to play the video. Press the [OK] button to pause the playback. Press it again to resume.

4. Press [▲] [▼] to adjust the video volume.
5. Hold [▲] [▼] to fast forward or backward, the speed is 2X/4X/8X/16X/32X/64X.
6. Press [MENU] button to stop playing and return to video list.

Tips: you can play all videos continuously. After select one video, hold menu button and choose "Video play all".

Viewing photos

1. Hold [MENU] button to enter into photo mode
2. Press [▼] button to enter into photo list



3. Press the [▲] [▼] button to select picture and press the [OK] button.
4. During viewing, press [▲] [▼] button to view preview or the next photo.
5. Press [MENU] button to return to photo list.

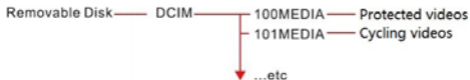
Deleting Files

To delete or protect file(s), do the following

From the video standby or photo standby window :

- 1.Press[▼]button to enter into video or photo list
- 2.Press[▲] [▼] button to select file. Hold [Menu] button for 2 second.
- 3.Press [▲] [▼] button to Delete file, and press OK.
- 4.Choose from “Delete this file” and “Delete all files”.

File structure



Video file names will be like 20140526-1432_0001.mp4

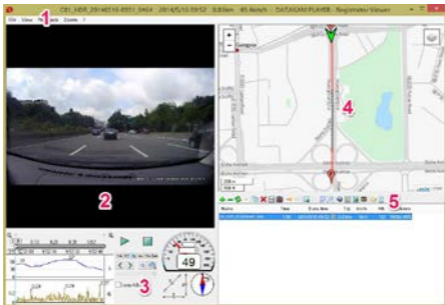
GPS PLAYER – ON WINDOWS PC'S.

When the micro SD card is formatted by the DVR, there will be a PC player file automatically saved on your SD card. Named: **RegistratorViewer5.8.exe**

Copy this file to your desktop.

Open the player on your Windows computer for DVR video and GPS playback.

Note: If you delete the player, just format your micro SD card in the DVR and it will appear again. *Please do backup your important videos or data before formatting.*



How to use it:

Press the “+” to add video to play list. (5 of picture above) or if DVR is connected to computer, it will detect video files automatically. Hit play button in window 3.

Information explain:

- 1: Title: here is the key information about this video.
- 2: Video
- 3: Here you can find the direction, G-Sensor and speed
- 4: GPS route. You can choose different built-in maps.
- 5: File tools and video list.

Speed cam warnings

This feature is currently not available in Australia or New Zealand.

Adjusting the Settings

Recording Setting

Press [Menu] to enter into setup. Here you can see 4 settings of video. For detail, please check the menu tree of each settings.



Photo settings

Press the [▼] to switch to Photo settings. For detail, please refer to the menu tree.

GPS reception

The DVR needs to be able to receive satellite signals to determine its location.

Turning on inside a garage or undercover area will most likely result in no GPS reception until the vehicle is driven outdoors. Locating satellites whilst

driving/moving can delay reception. Turning on outdoors will result in much faster satellite reception. Heavy overcast clouds can also delay reception.

The DVR will say 'GPS ready' when signals are being received. The GPS icon display will turn from white to green. Driving before 'GPS ready' is announced will result in no GPS travel log being recorded prior to the announcement.

Motion detection

As shipped, the camera will automatically start recording when the engine is started and stop recording when the engine is turned off. This is assuming your vehicles power socket is ignition controlled. Through 'settings, you can select 'motion detection'.

The camera starts recording when it detects movement and stops when no movement is detected. When you start moving again, recording recommences.

Security function – motion detection;

If the camera is connected to a vehicles permanent power source, the vehicle can be parked with the camera still powered. If the camera 'sees' movement, say from a possible car thief, it will start recording. It will stop when no movement is detected.

Recording sound on/off;

The recording of sound can either be on or off.

When the DVR is on, press both up/down buttons at the same time to toggle sound on or off. The microphone icon will show the current setting.

System settings

Press the [▼] again to enter system settings. For each of these 3 pages setting, you can do the following:

1. Press [▲] [▼] button to select settings and press [OK] to enter.
2. Press [▲] [▼] button to select the right options and press [OK].
3. Repeat step 1, 2 until finish all setups.
4. After finish, press [MENU] to quit menu setup.

Menu

Refer to the below table for details on menu items and available menu options.

Menu	Description	Options
Resolution	Set the video resolution	2560 x1080 30P 21:9 2304 x1296 30P 16:9 1920x1080 45P 16:9 HDR1920x1080 30P 16:9 1920x1080 30P 16:9 1280x720 60P 16:9 1280x720 30P 16:9
Video quality	Set the video quality	S. Fine (Super Fine) Fine Normal

WDR	Software video boost	On/ Off
Stamp	Turn on or off stamps on video.	On/Off (cannot turn on separately, for example only showing time is not possible)
LDWS +FCWS	Lane departure and forward collision warnings	On/Off
LDWS Calibration	Calibrates the camera to true horizon	2 set-up lines Horizon & top of dashboard
Still photo resolution	Set photo resolution	9M (4000*2250 16:9) 6M (3264*1836 16:9) 4M (2688*1512 16:9) (Sensor original is 4M)
Still photo quality	Set photo quality	S.Fine (Super fine) Fine Normal
Stamp	Turn on or off stamps on photo	On/Off (tips refer to video stamps)
White balance	To set white balance	AUTO Incandescent D4000 D5000 Sunny Cloudy

System	Set the right TV system	NTSC(recording 30fps) PAL(recording 25fps)
Date/Time	Set date and time	Format: Year/Month/Date; Hour: Minute ([Menu] to move right; [OK] to confirm)
Car ID	Set your car ID number which can show on the video.	<ol style="list-style-type: none"> 1. Press [OK] to choose ENG/CHS/RUS characters; 2. Use [▲] [▼] to move left and right; 3. Use [menu] to go down 4. Press [OK] button to input each character 5. Choose backspace if to replace old characters. 6. Finally select OK to quit. <p>P.S. support up to 9 digits.</p>
Format	Format the card	Yes/No (deletes all data including saved videos)
Default setting	Restore the factory settings	Yes/No

Motion detection	Will start recording if objects move in front of the camera.	<ol style="list-style-type: none"> 1. After start, there will be a sign on the screen. 2. Press OK to start detection. The sign will blink. 3. After detected objects, it will start recording.
LCD OFF time	Set how long to turn off the screen	OFF/30sec/1min/3min
Split time	Set how long will be each video file	1,2,5,10min Please note it is cycle recording. New files will replace the old ones.
GPS Power	Turn on or off the GPS	ON/OFF After off, the GPS sign will be off.
Time Zone	Set the time zone	Default is +4 Use [▲] [▼] to move left and right.
G-Sensor Level	Set the G-Sensor sensitivity	Use [▲] [▼] to move left and right. 0 is turned OFF. 5 is the most sensitive.

Scene Mode	Set different recording mode	OFF/Night/Night/Portrait/Sports/Landscape/Portrait/Sunset/Sand/Snow/Flower/Firework/Water/Backlight/Tripod/BlueSky/Macro/Arena
AE BIAS	Set the EV exposure adjustment	Set from [-2.0] to [2.0] Use [▲][▼] to move left and right.
Stamp Speed OFF	The GPS speed will hide on video if meet the setting speed.	Set from 20 – 170. Default is off. For your safety, please obey local laws and do not speed.
Speaker volume	Set the speaker output volume	Set from 0(mute) to 8. Default is 8. Use [▲][▼] to move left and right.
Language	Set the menu language	ENG/简体中文/繁体中文/Русский
EDOG BEEP	Beep for speed camera warning	Function not currently available in Australia or New Zealand. Programme off to avoid false warnings

Notice



This symbol on the product or on the packaging indicates that this cannot be disposed of as a household waste. You must dispose of your waste equipment and/or battery by handling it over to the



applicable take-back scheme for the recycling of electrical and electronic equipment and/or battery. For more information about recycling of this equipment and/or battery, please contact your city

office, the shop where you purchased the equipment or your household waste disposal service. The recycling of materials will help to conserve natural resources and ensure that it is recycled in a manner that protects human health and environment.

CE Regulatory Notice

This equipment complies with the requirements set out in the Council Directives on the Approximation on of the Laws of the Member States relating Electromagnetic Compatibility (2004/108/EC); the Low Voltage Directive (2006/95/EC); the Restriction of The Use of Certain Hazardous Substances in Electrical And Electronic Equipment Directive (2002/95/EC), Turkish EEE Directive; the Commission Regulation (EC) No 1275/2008 implementing Directive 2005/32/EC of the European Parliament and of the Council with regard to eco-design requirements for standby and off mode electric power consumption of electrical and electronic household and office equipment, and the Directive 2009/125/EC.

4. Specifications

Item	Description
Image sensor	1/3" CMOS Sensor
Effective pixels	2688 (H) x 1520 (V)
Storage media	Supports Micro SDHC up to 128GB class 10 or above – 32GB supplied
LCD screen	2.4" LCD color TFT (262K pixels)
Lens	160°Wide Angle Fixed Focus lens F2.0, f=2.8mm
Focus range	1.5m~ Infinity
Max resolution	2560 x 1080 30fps 2304 x 1296 30fps For all resolutions, please refer to menu.
Photo	4M (2304 x 1536) JPG format For all definitions, please refer to menu.
Shutter	Electronic shutter Auto:1/2 ~1/2000 sec.
GPS	Built-in Ublox chip
G-Sensor	3-Axis G-Force sensor
ISO	Auto

White balance	Auto
Microphone	Yes
Speaker	Yes
Interface	Mini USB, Mini C Type HDMI
Battery	Built-in 400mAH Li-Po rechargeable
Operating Temperature	-10° ~ 60° C
Operating Humidity	20 ~ 70% RH
Storage Temperature	-20° ~ 80° C
Dimensions	62.5(W) x 67(H) x 34.5(D) mm
Weight	100g



www.mongoose.com.au

www.mongoose.co.nz